

DAV
PREFABRİK



PREFABRİK
KONTEYNER
KONUT
ÇELİK YAPILAR



HAKKIMIZDA

Drn Konteyner Prefabrik
2018 yılında Ankara'da kurulmuştur. Temel prensiple-
rimiz, işimizi üstün saygı ile sahiplenmek, titiz çalışma
yürütmek, müşterilerimize en iyi hizmeti verebilmek,
sağlam ve düşük maliyetli bir şekilde en kaliteli işi ya-
pıp, etkin bir çözüm ortağı olmaktır. En kaliteli hizmeti
en ekonomik koşullarda sunarak, müşteri memnuniyeti
ilkesini benimseyen yüksek profilli uzmanları ile şir-
ketlerin farklı taleplerine en iyi şekilde cevap ver-
mektedir. faaliyet gösterdiği sektörlerde kalite ve müşteri
memnuniyetini ana ilkeler olarak benimseyerek, saygı
ve toleranstan ödün vermeyen, lider bir firma olma
yolunda ilerlemektedir.

VİZYONUMUZ

Vizyonumuz, dünyada gelişen prefabrike yapı üretim
ve tasarım teknolojilerini ülkemizde uygulayarak, mo-
düler, hızlı ve kolay monte edilen, tekrar eden kullanıma
uygun, kullanım bölgesinin doğasına, iklim koşullarına,
mühendislik standartlarına ve müşterilerimizin kültürel
ve sosyal yaşam ihtiyaçlarına uygun yapılar tasarlayıp
üretmektir.

MİSYONUMUZ

Misyonumuz, müşterilerimizin yapılar ile ilgili deęi-
şen taleplerine hızlı ve ekonomik çözümler üretmek,
ürünlerimize olan ilgiyi devamlı kılmak ve ürün kalitesini
artırmak amacıyla yeni teknolojilere özenle yatırımlar
yapmak, gelişen iş hacmine paralel olarak ülkemizin
sanayi gelişimine katkıda bulunmaktır.

ABOUT US

*Drn Konteyner Prefabrik, was
established in 2018 and its location is in Ankara. Our
basic principles are to adopt our business with superior
respect, to carry out rigorous work, to provide the best
service to our customers, to make the highest quality
work in a robust and low-cost way and to be an effective
solution partner. By offering the highest quality service in
the most economic conditions, Şan Konteyner Prefabrik
responds to the different demands of the companies
in the best way with its high-profile experts adopting
the principle of customer satisfaction.
Şan Konteyner Prefabrik has
been taking steps towards becoming a leading company
in the sectors where it operates by adopting quality and
customer satisfaction as main principles and not compro-
mising respect and tolerance.*

OUR VISION

*Our vision is to produce modular, fast and easy to install,
suitable for re-use prefabricated structures by desig-
ning in accordance with the nature, climatic conditions,
engineering standards and the needs of our customers'
cultural and social life and to implement the latest pre-
fabricated building production and design technologies
in our country*

OUR MISSION

*Our mission is to produce fast and economical solutions
to the changing demands of our customers, to invest in
new technologies continuously, to meticulously improve
the product quality, and to contribute to the development
of our country in parallel with the developing business
volume.*

PREFABRİK ŞANTIYE BİNALARI

Kullanılan Malzeme Özellikleri

Standart üretimlerde kar yükü 80 kg², rüzgar yükü 102 km/h dir. Yapı yükseklikleri ihtiyaca göre 2500-2800-3000 mm olup tek katlı veya çift katlı olarak üretimi yapılmaktadır. Yapılar 1020 mm veya 1250 mm nin katları ile istenilen uzunluk ve genişlikte her türlü yerleşim planına uyarlanabilen, defalarca montaj ve demontaj özelliğine sahip yapılardır. Çatı makasları roll-form makinelerinde kaynaksız olarak özel şekillendirilmiş profillerden veya kutu profillerden oluşmaktadır. Çatı kaplamasında galvanizli trapez sac, boyalı sac, sandviç panel ve shingle uygulaması yapılmaktadır. Birleşim ve kapatma elemanları galvanizli sacdan özel şekillendirilmiş profillerden oluşur. Elektrostatik toz boyalıdır. İç ve dış duvarlarda 60 mm ve 100 mm eps dolgulu her iki yüzeyi ral 9002 renginde elektrostatik toz boyalı, hadveli galvaniz sac veya çimentolu yonga levha olan sandviç paneller kullanılır. Pencere TSE belgeli sert plastik, çelik takviyeli beyaz pvc doğramalardır, 4+12+4 mm çift cam kullanılmaktadır. Dış kapılar 2 mm bükme sac profil kasalı, 1 mm kalınlıkta kanatlı, her iki yüzü elektrostatik fırın boyalı özel şekillendirilmiş sacdan üretilmiş ve camyünü yalıtımlı çelik kanatlı kapılardır. Rüzgar, toz ve sese karşı contalıdır. İç kapılar ahşap serenlerin birleştirilmesiyle oluşan, içi kağıt petek dolgulu amerikan panel ahşap pres kapılardır. TSE belgeli vitriye malzemesi ve armatürleri, elektrik ve sıhhi tesisatı döşenmiş olarak teslim edilir.

Kullanım Alanları

İşçi Yatakhaneleri, Ofis Binaları, Mühendis Yatakhaneleri, Yemekhane ve Lokal Binaları, Askeri Yapılar, Hizmet Binaları ve İdari Binalar, Wc-Duş Binaları

PREFABRICATED SITE FACILITIES

Direct Material Properties

In standard production snow load is 80 kg², wind load is 102 km/h. The building heights are 2500-2800-3000 mm, and it can be produced as single layer or double layer according to need. The buildings can be adapted to any layout with desired length and width with multiples of 1020 mm or 1250 mm and they have the feature of installation and removal procedure. The roof trusses consist of specially shaped profiles without welding in roll-form machines or box profiles. Galvanized trapezoidal sheet (deck sheet) metal, painted sheet, sandwich panel and shingle are applied in the roof covering. The joining and closing elements consist of specially formed profiles from galvanized sheet. Electrostatics' feature is powder coated. Sandwich panels, which are 60 mm and 100 mm eps filled, electrostatic powder coated, galvanized steel pitch sheet or cemented flakeboard are used for inner and outer wall. Windows are steel reinforced hard plastic white pvc joinery that has TSE certified and double glass with 4 + 12 + 4 mm. Exterior doors are made of 2 mm bending sheet metal frame, 1 mm thick wing, both sides of electrostatic oven painted special shaped sheet and glass wool insulated steel wing doors. They are sealed against wind, dust and noise. Interior doors are American panel wooden press doors that are wooden honeycomb filling formed by combining wooden spines. They are delivered as furnished with TSE certified vitrified material and fittings, electrical and sanitary installations.

Usage Areas

Workers Dormitories, Office Buildings, Engineer Dormitories, Dining Hall and Local Buildings, Military Buildings, Service Buildings and Administrative Buildings, WC-Shower Buildings



KONTEYNER YAPILAR

Kullanılan Malzeme Özellikleri

Müşterilerin yurtiçi ve yurtdışı şantiyelerindeki ihtiyaçları için, demonte ya da montajlı olarak, kurulacağı yerin kar yükü, rüzgar yükü, iklim şartları ve konteynerin ölçüleri dikkate alınarak imalat yapılmaktadır. Taşıyıcı sistemin malzeme kalınlıkları bu hesaplara göre belirlenmektedir. İç ve dış duvarlarda 60 mm eps dolgulu her iki yüzeyi ral 9002 renginde elektrostatik toz boyalı, hadveli galvaniz sac sandviç panel kullanılır. Dış kapılar 2 mm bükme sac profil kasalı, 1 mm kalınlıkta kanatlı, her iki yüzü elektrostatik fırın boyalı özel şekillendirilmiş sacdan üretilmiş ve camyünü yalıtımlı çelik kanatlı kapılardır. Rüzgar, toz ve sese karşı contalıdır. İç kapılar ahşap serenlerin birleştirilmesiyle oluşan, içi kağıt petek dolgulu amerikan panel ahşap pres kapılardır. Pencereler TSE belgeli sert plastik, çelik takviyeli beyaz pvc doğramalardır, 4+12+4 mm çift cam kullanılmaktadır. TSE belgeli vitriyeye malzemesi ve armatürleri, elektrik ve sıhhi tesisatı döşenmiş olarak teslim edilir. Modüler yan yana birleşik olarak veya üst üste konularak da kullanılabilir.

Kullanım Alanları

İşçi Yatakhaneleri, Ofisler, Mühendis Yatakhaneleri, Yemekhaneler, Kumanda Kabinleri, Güvenlik Kabinleri, Wc-Duş Üniteleri

CONTAINER BUILDINGS

Direct Material Properties

Manufacturing is done considering the disassembled or assembled features, snow load, wind load, climatic conditions and container dimensions for the needs in customers' local and international construction sites. Material thicknesses of the carrier system is determined according to these calculations. Galvanized steel pitch sheet sandwich panels which are 60 mm and 100 mm eps filled and coated with electrostatic powder painted in ral 9002 color on both surfaces are used for inner and outer wall. Exterior doors are made of 2 mm bending sheet metal frame, 1 mm thick wing, both sides of electrostatic oven painted special shaped sheet and glass wool insulated steel wing doors. They are sealed against wind, dust and noise. Interior doors are American panel wooden press doors that are wooden honeycomb filling formed by combining wooden spines. Windows are steel reinforced hard plastic white pvc joinery that has TSE certified and double glass with 4 + 12 + 4 mm. They are delivered as furnished with TSE certified vitrified material and fittings, electrical and sanitary installations. They can also be used modularly, side by side or by overlapping.

Usage Areas

Workers Dormitories, Office Buildings, Engineer Dormitories, Dining Halls, Control Cabinets, Security Cabinets and WC-Shower Units



ÇELİK YAPILAR

Kullanılan Malzeme Özellikleri

NPI putrel kolon ve kiriş, köşebent rüzgar çaprazları özel şekillendirilmiş galvanizli profil veya kutu profil aşıklardan oluşur. Birleşimleri tamamen çelik civata ve somun ile yapılmaktadır. Yapının defalarca sökülüp tekrar kurulmasına olanak sağlar. Cephe ve çatı kaplamalarında 0,50 mm 27/200 hadveli galvanizli trapez sac veya eps ve poliüretan dolgulu her iki yüzeyi ral 9002 renginde elektrostatik toz boyalı, hadveli galvaniz sac sandviç panel kullanılır. Hadvelerin birbirleri üzerine sabitlenmesi ve özel detaylar sayesinde sızdırmaz bir yüzey oluşmaktadır. Kaplama, özel contalı vidalar ile çelik aşıklara tesbit edilir. Yapıların yan cephe saçak altında cam elyaf takviyeli (CTP) şeffaf polyster aydınlatma levhaları kullanılarak gün ışığının %83' nü içeri vererek doğal aydınlatma sağlar. Standart üretimlerde kar yükü 80 kg², rüzgar yükü 102 km/h dir. TS 498 ve TS 648 olmak üzere TSE, DIN, ASTM ve ISO standart ve normal tasarımlarımızda referans oluşturmaktadır.

Kullanım Alanları

Atölye ve Depolar, Hangarlar, Üretim Tesisleri,
Garajlar, Spor Tesisleri, Hayvan Barınakları

STEEL STRUCTURES

Direct Material Properties

NPI putrel column and beam, gusset wind diameters are specially formed by galvanized profile or box profile. Joints are completely made of steel bolts and nuts. This feature allows the structure to be removed and reinstalled repeatedly. In facade and roof coverings, 0.50 mm 27/200 with galvanized trapezoidal sheet or eps and polyurethane filled, both surfaces coated by electrostatic powder colored by ral 9002 galvanized steel sheet sandwich panel is used. Thanks to the fixing of the ribs on each other and other special details, a sealed surface is formed. The coating is fixed to steel purlins with special seal screws. Glass fiber reinforced (GRP) transparent polyester illumination plates are used under the side facade of the buildings and this provides 83% of daylight and provides natural lighting. In standard production snow load is 80 kg², wind load is 102 km/h. TS 498 ve TS 648 as well as TSE, DIN, ASTM ve ISO are the references of our standard and normal designs.

Usage Areas

Workshops and Warehouses, Hangars, Production
Facilities, Garages, Sports Facilities, Animal Shelters



PREFABRİK KONUTLAR

Kullanılan Malzeme Özellikleri

Standart üretimlerde kar yükü 80 kg², rüzgar yükü 102 km/h dir. Yapı yükseklikleri ihtiyaca göre 2500-2800-3000 mm olup tek katlı veya çift katlı olarak üretilmektedir. Yapılar 1250 mm nin katları ile istenilen uzunluk ve genişlikte her türlü yerleşim planına uyarlanabilen, defalarca montaj ve demontaj özelliğine sahip yapılardır. Çatı makasları roll-form makinelerinde kaynak-sız olarak özel şekillendirilmiş profillerden veya kutu profillerden oluşmaktadır. Çatı kaplamasında galvanizli trapez sac, boyalı sac, sandviç panel ve shingle uygulaması yapılmaktadır. Cep-hede boya uygulaması, siding kaplama vb. malzemeler uygulanabilir. Birleşim ve kapatma elemanları galvanizli sacdan özel şekillendirilmiş profillerden oluşur. Elektrostatik toz boyalıdır. İç ve dış duvarlar 60 mm ve 100 mm eps dolgulu her iki yüzeyi çimentolu yonga levha olan sandviç paneller kullanılır. Pencere ve TSE belgeli sert plastik, çelik takviyeli beyaz pvc doğramalardır, 4+12+4 mm çift cam kullanılmaktadır. Dış kapılar 2 mm bükme sac profil kasalı, 1 mm kalınlıkta kanatlı, her iki yüzü elektrostatik fırın boyalı özel şekillendirilmiş sacdan üretilmiş ve camyü-nü yalıtımlı çelik kanatlı kapılardır. Rüzgar, toz ve sese karşı contalıdır. İç kapılar ahşap serenlerin birleştirilmesiyle oluşan, iç kağıt petek dolgulu amerikan panel ahşap pres kapılardır. TSE belgeli vitriyfe malzemesi ve armatürleri, elektrik ve sıhhi tesisatı döşenmiş olarak teslim edilir.

Kullanım Alanları

Hobi Bahçeleri, Bağ Evleri, Köy Evleri, Afet Konutları, Askeri Lojmanlar, İşçi ve Personel Lojmanları

PREFABRICATED RESIDENCES

Direct Material Properties

In standard production, snow load is 80 kg² and wind load is 102 km/h. The building heights are 2500-2800-3000 mm, and it can be produced as single layer or double layer according to need. The buildings can be adapted to any layout with desired length and width with multiples of 1020 mm or 1250 mm and they have the feature of installation and removal procedure. The roof trusses consist of specially shaped profiles without welding in roll-form machines or box profiles. Galvanized trapezoidal sheet (deck sheet) metal, painted sheet, sandwich panel and shingle are applied in the roof covering. As the application of facade paint, siding coating etc. can be applied. The joining and closing elements consist of specially formed profiles from galvanized sheet. Electrostatics' feature is powder coated. Sandwich panels, which are 60 mm and 100 mm eps filled, electrostatic powder coated, galvanized steel pitch sheet or cemented flakeboard are used for inner and outer wall. Windows are steel reinforced hard plastic white pvc joinery that has TSE certified and double glass with 4 + 12 + 4 mm is used. Exterior doors are made of 2 mm bending sheet metal frame, 1 mm thick wing, both sides of electrostatic oven painted special shaped sheet and glass wool insulated steel wing doors. They are sealed against wind, dust and noise. Interior doors are American panel wooden press doors that are wooden honeycomb filling formed by combining wooden spines. They are delivered as furnished with TSE certified vitrified material and fittings, electrical and sanitary installations.

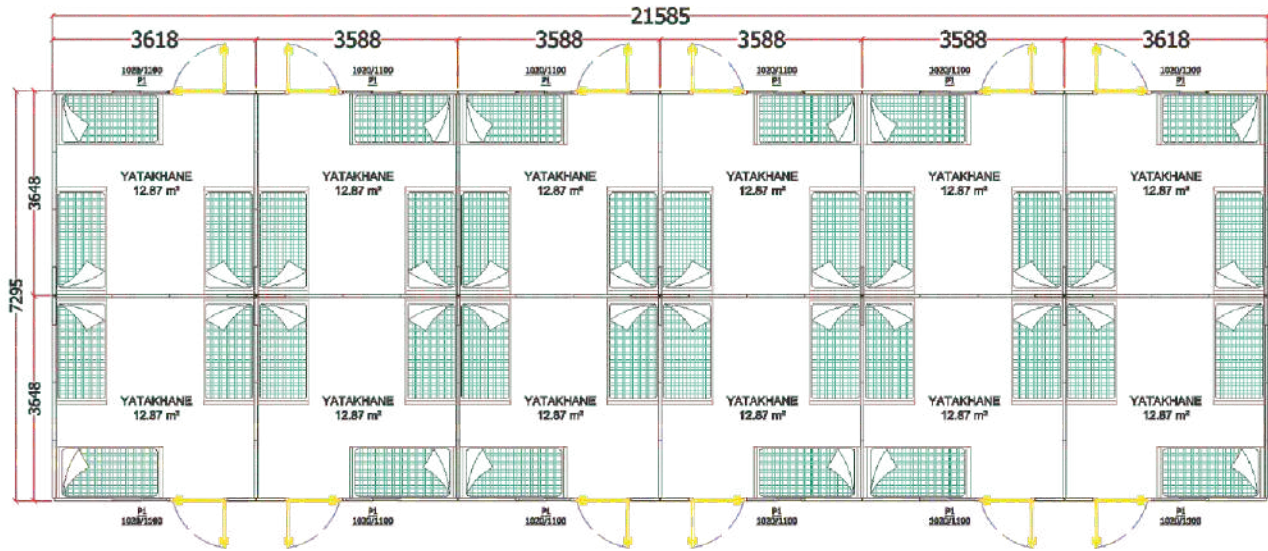
Usage Areas

Urban Gardens, Hobby Gardens, Country Cottages, Village Houses, Disaster Housing, Military Housing, Worker and Staff Housing

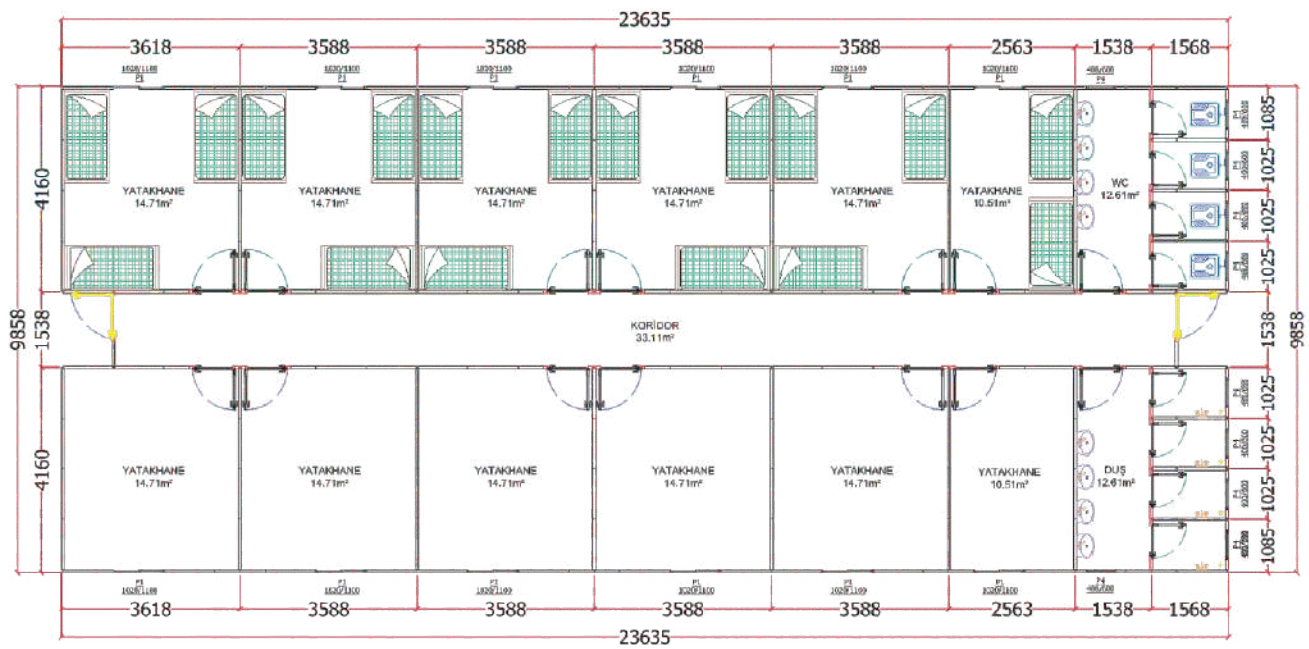




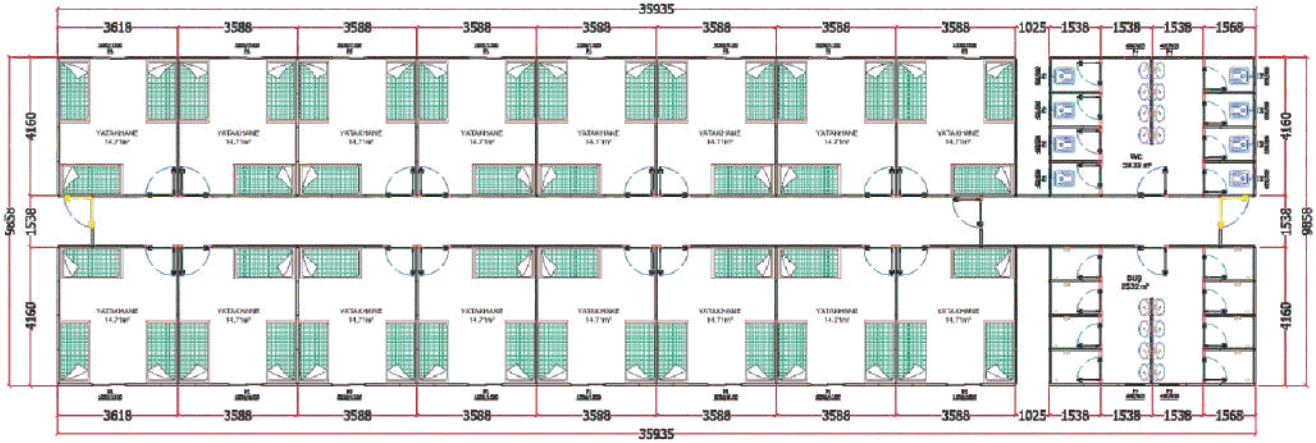
İŞÇİ YTK 157.46 m²



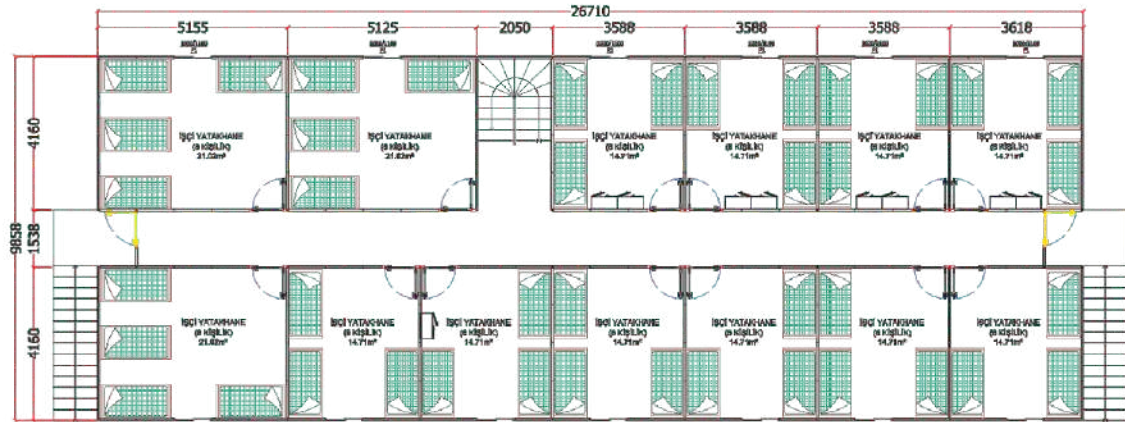
İŞÇİ YTK 232.99 m²



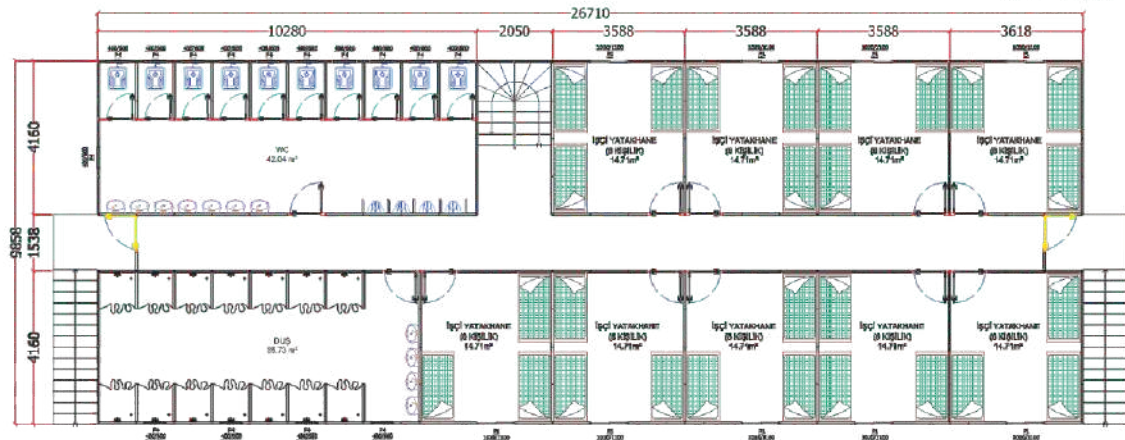
İŞÇİ YTK 354.25 m²



İŞÇİ YTK 526.61 m²

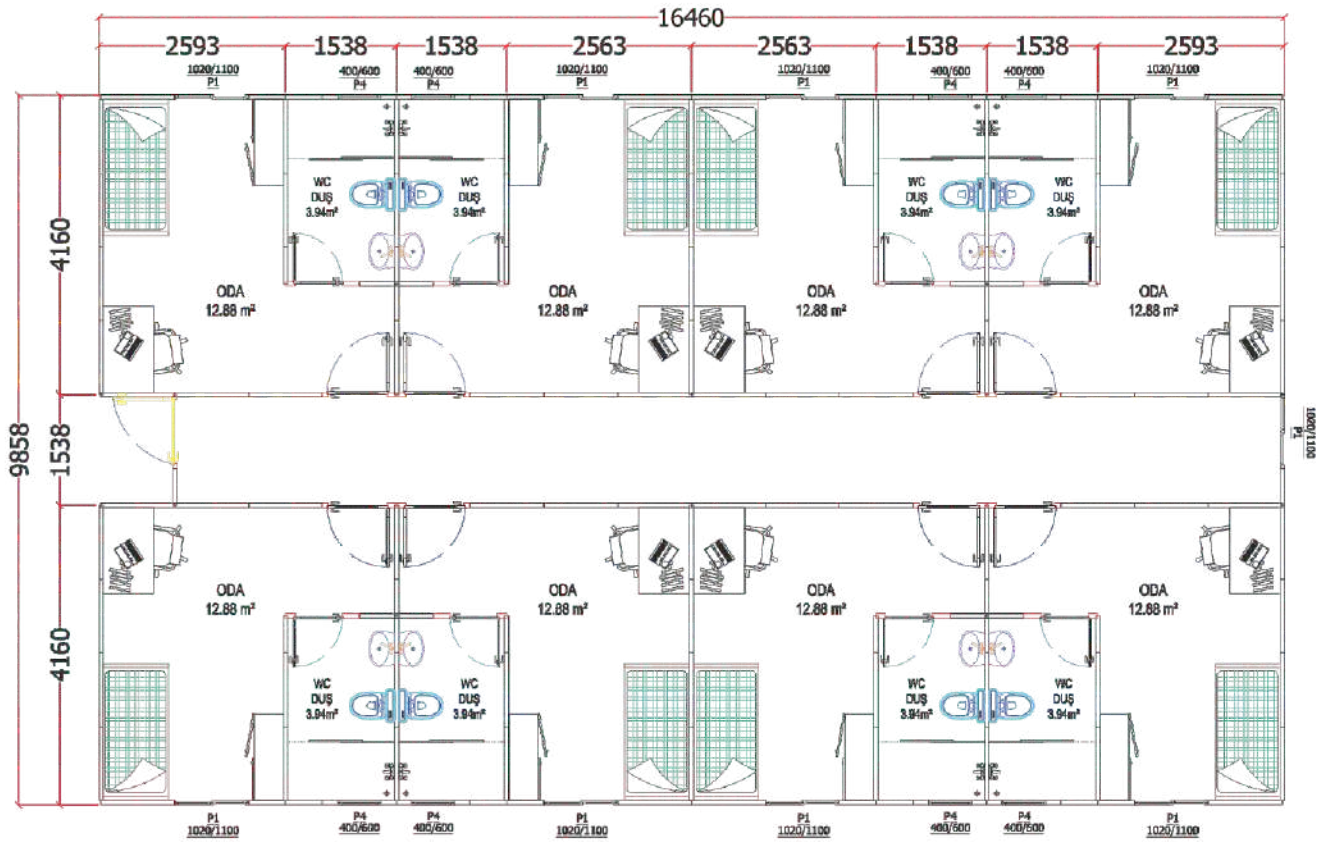


1.KAT PLANI

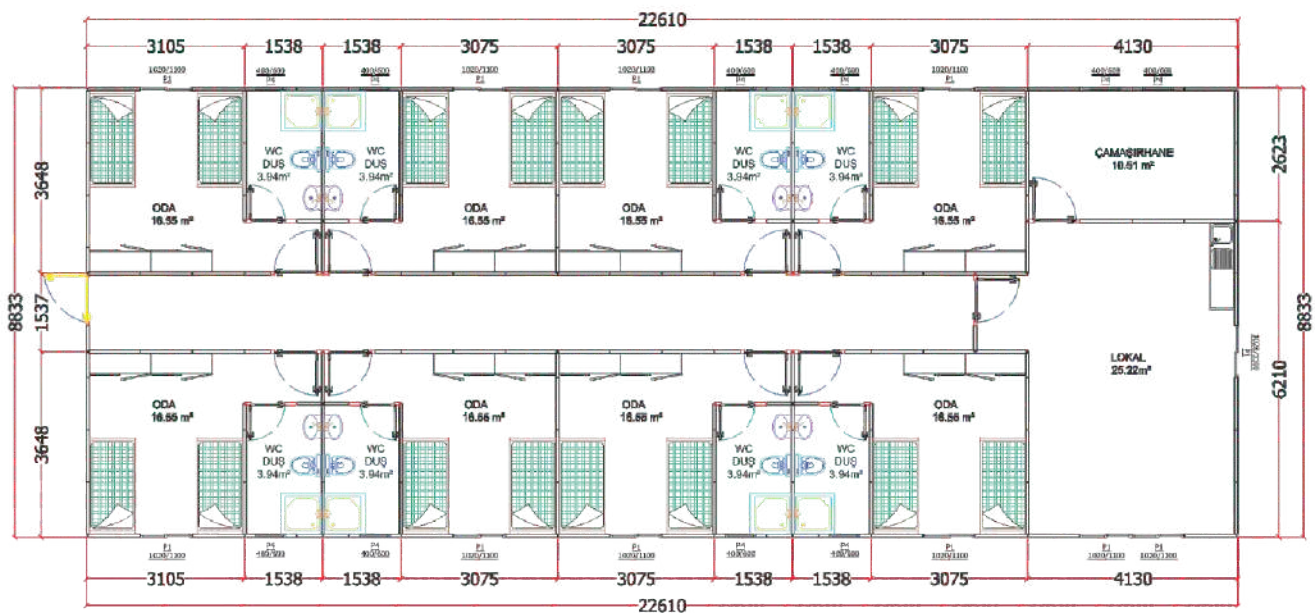


ZEMİN KAT PLANI

MÜHENDİS YTK 162.26 m²

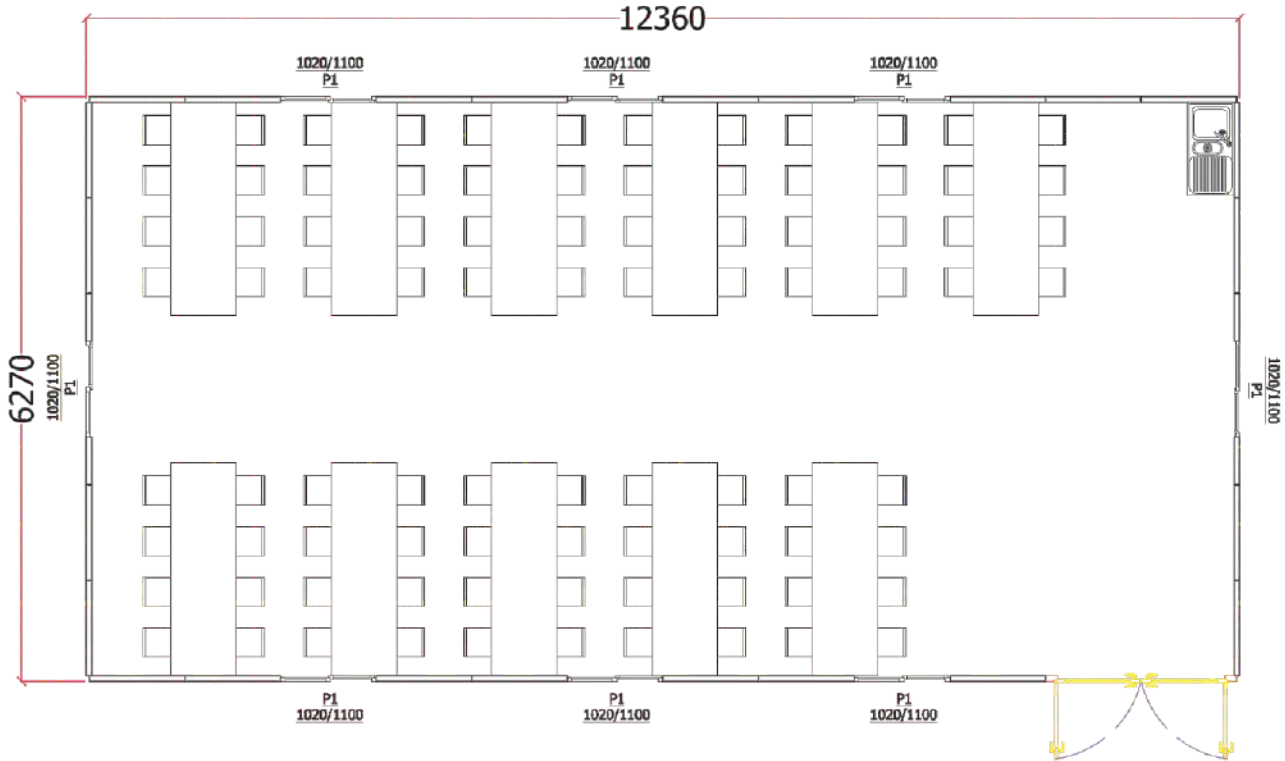


MÜHENDİS YTK 199.71 m²

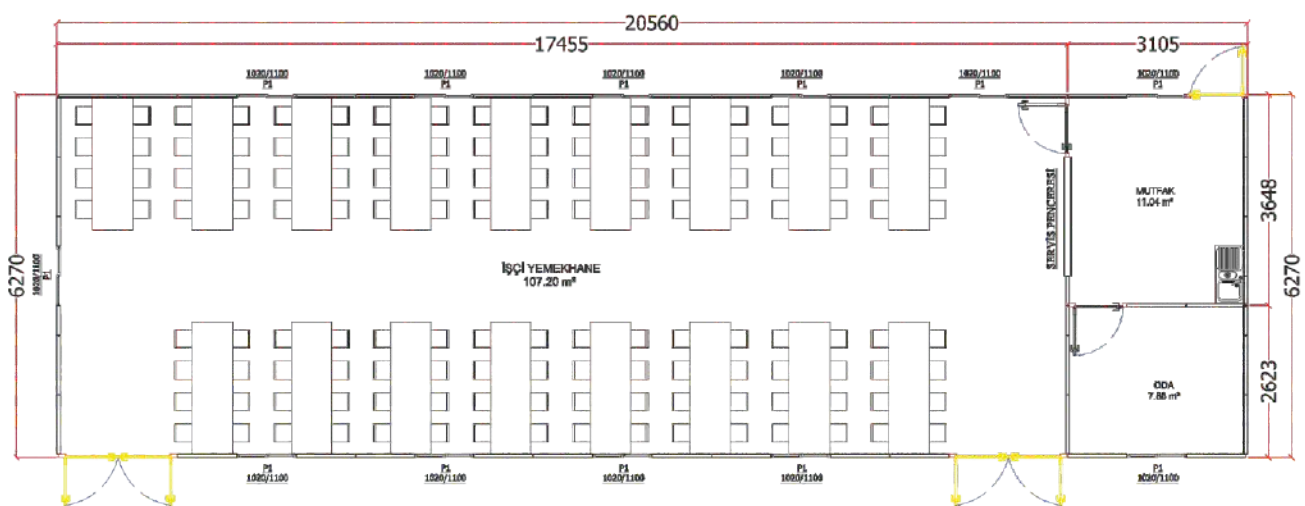




YEMEKHANE 77.50 m²

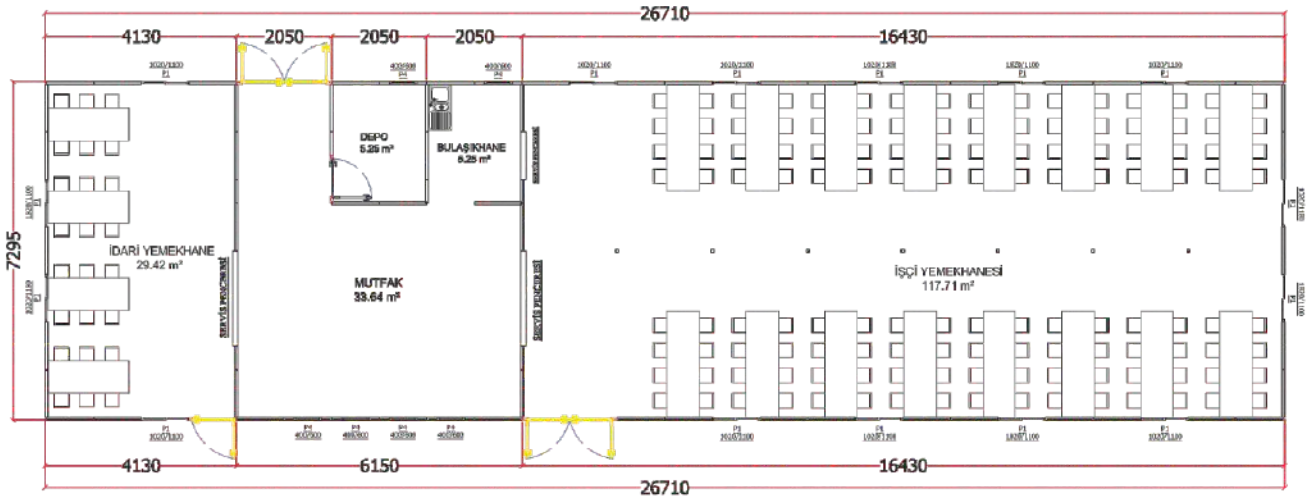


YEMEKHANE 128.91 m²



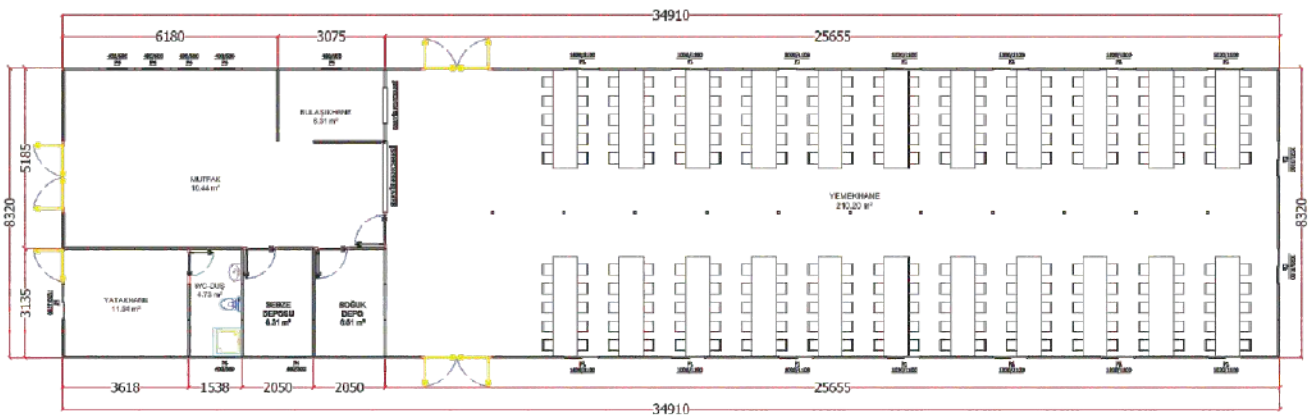
YEMEKHANE

194.85 m²



YEMEKHANE

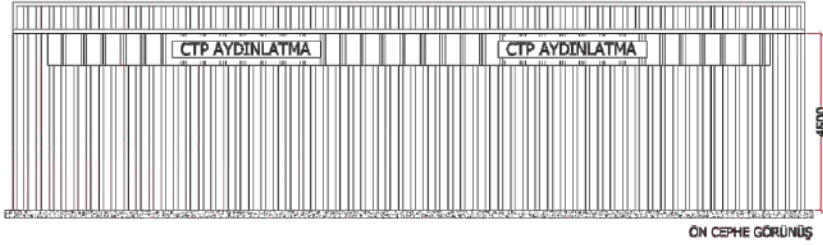
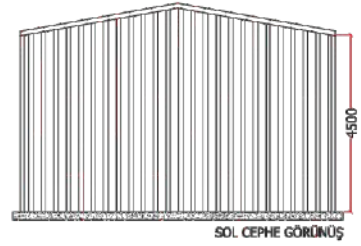
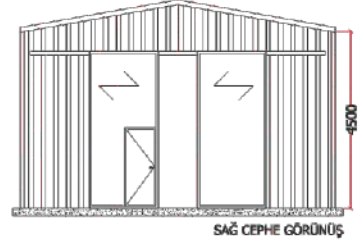
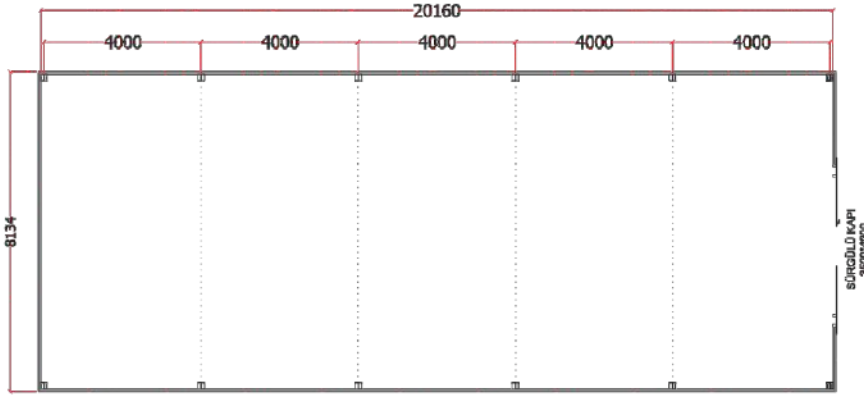
290.45 m²



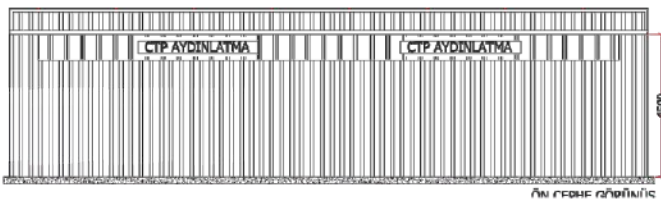
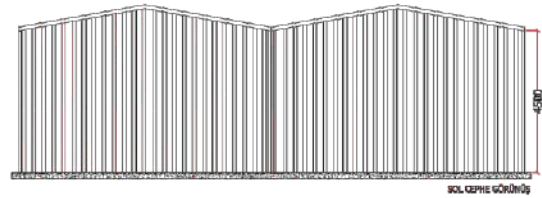
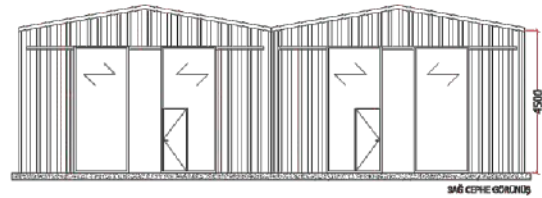
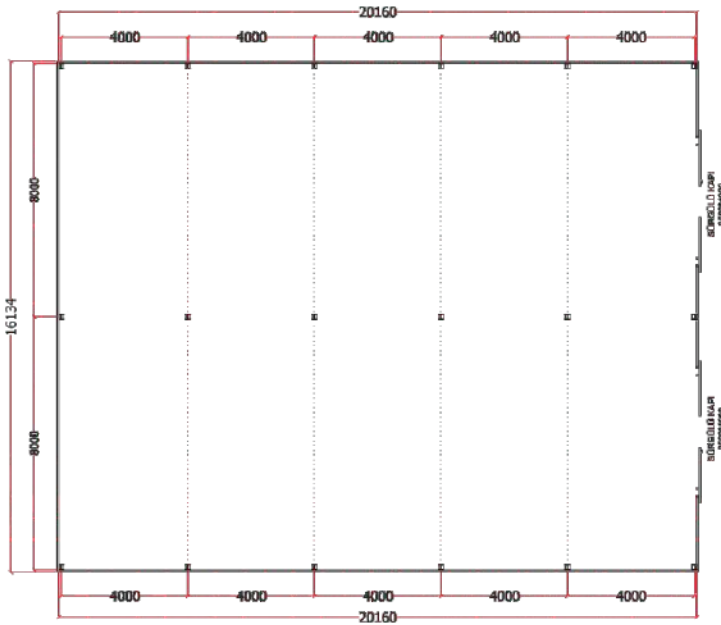


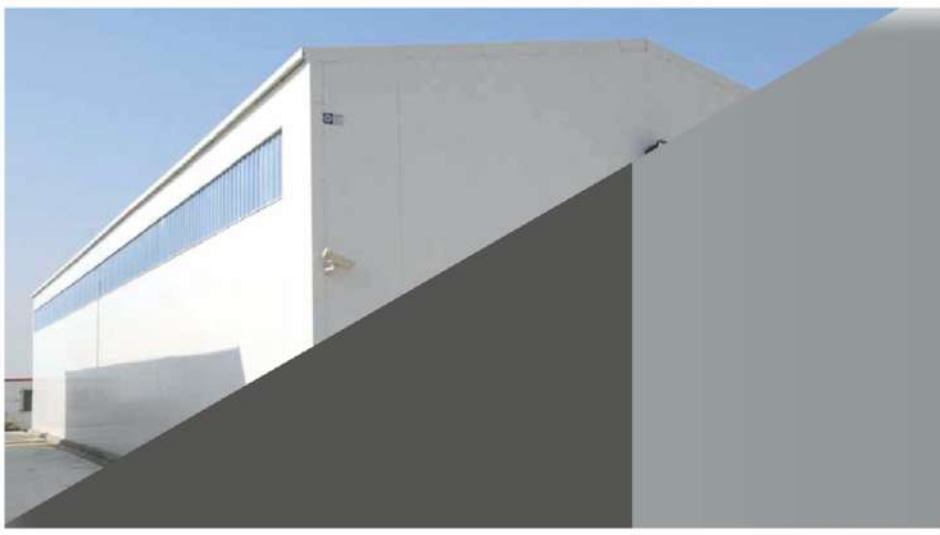


ÇELİK DEPO BİNASI 163.98 m²



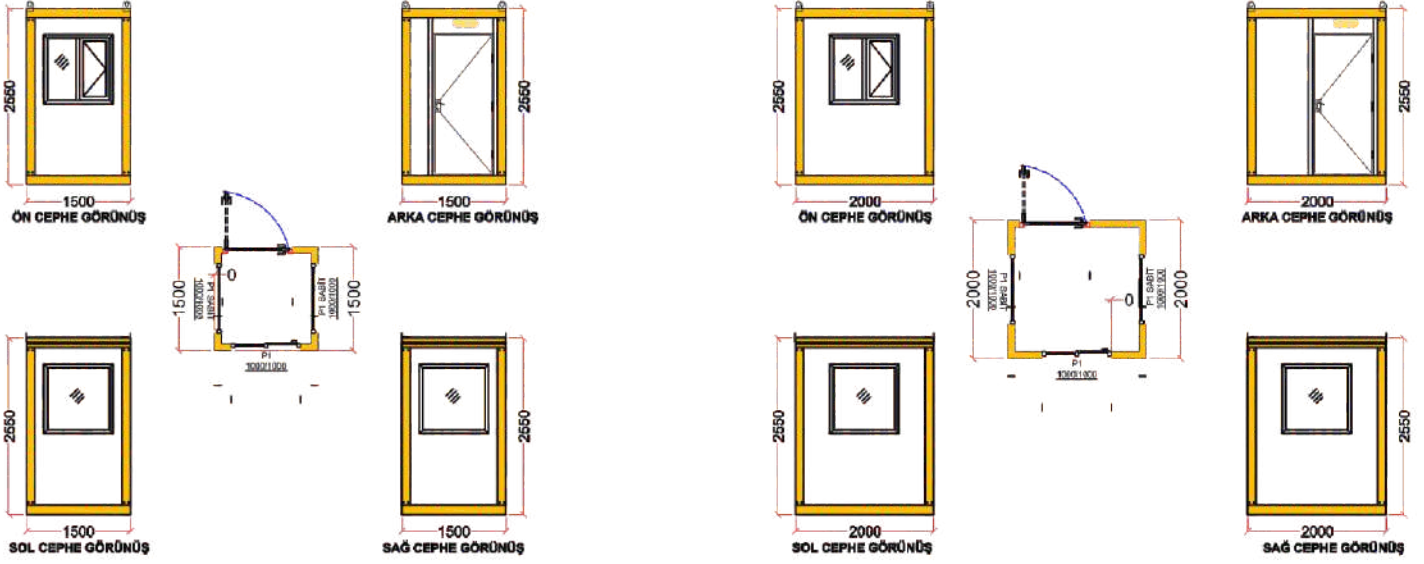
ÇELİK DEPO BİNASI 325.26 m²



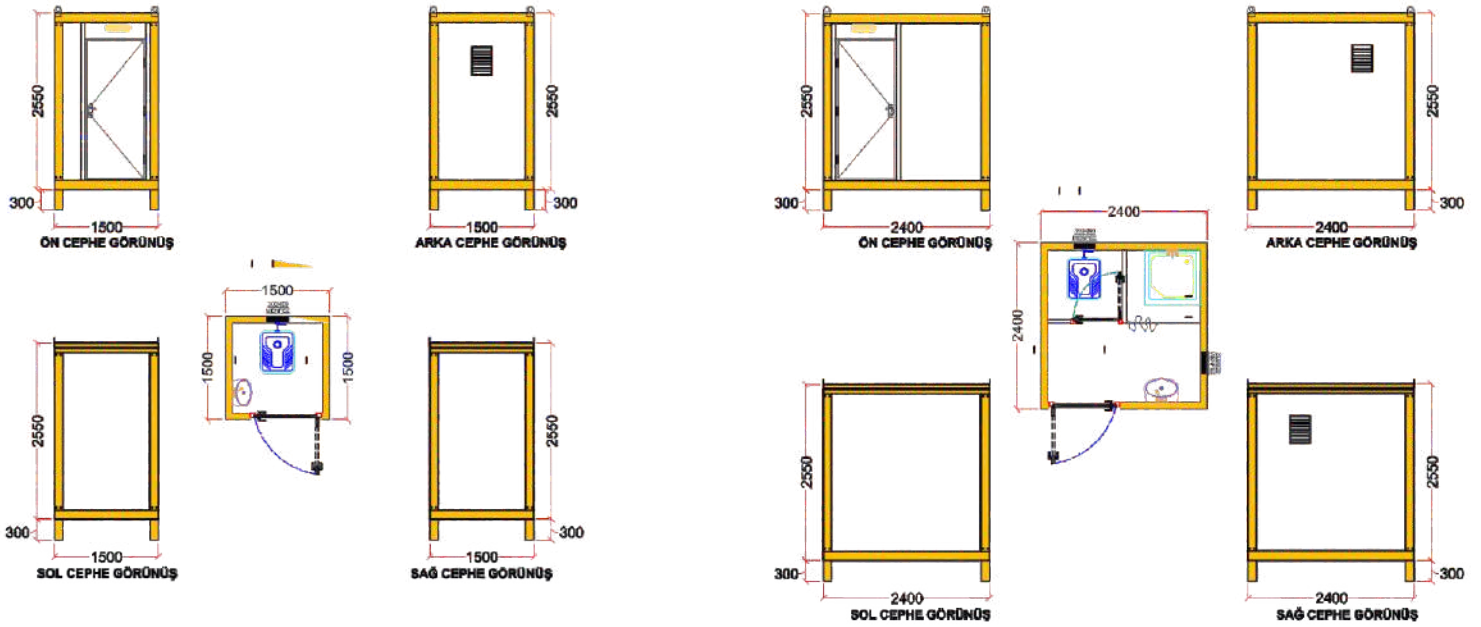




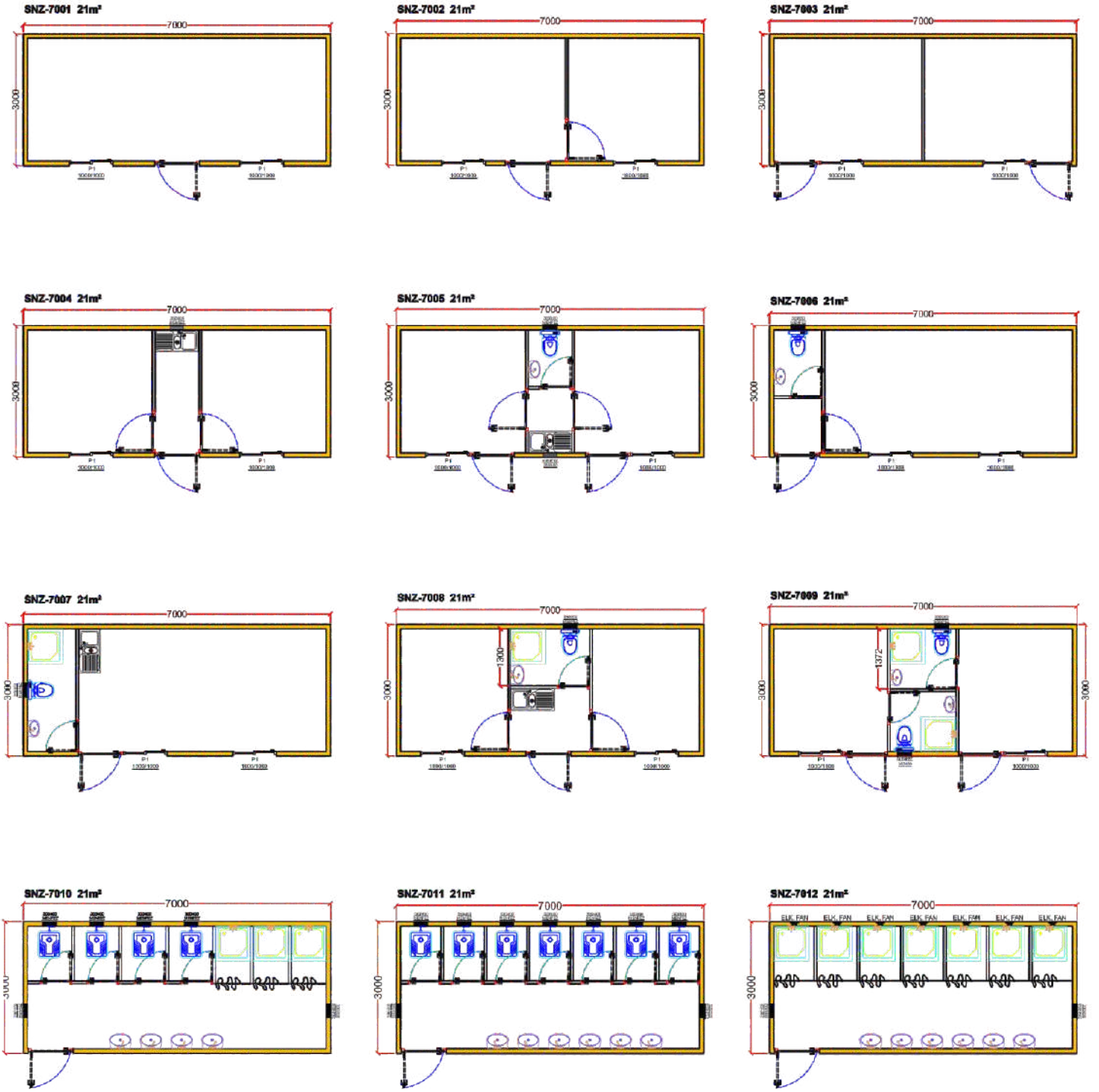
GÜVENLİK KABİNLERİ



WC DÜŞ KONTAYNER



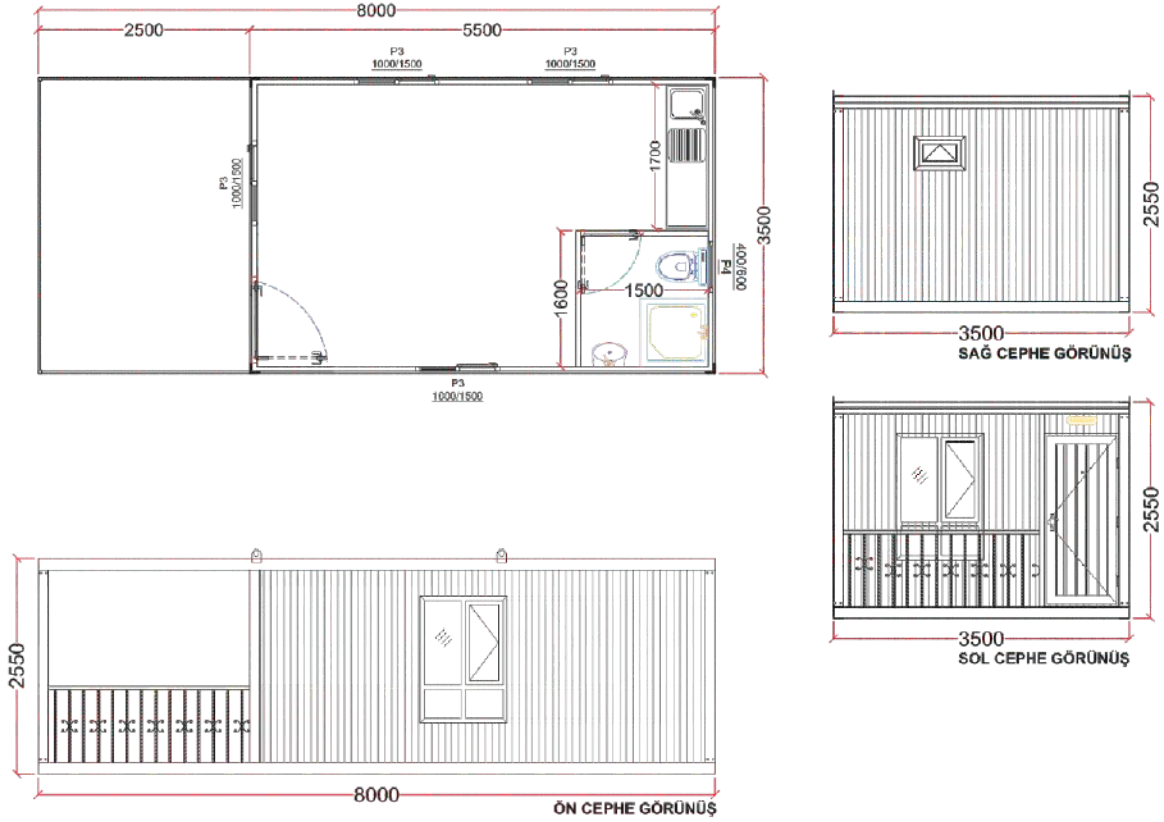
KONTEYNER PLANLARI



İSTENİLEN ÖLÇÜLERDE ÜRETİMLERİMİZ MEVCUTTUR.

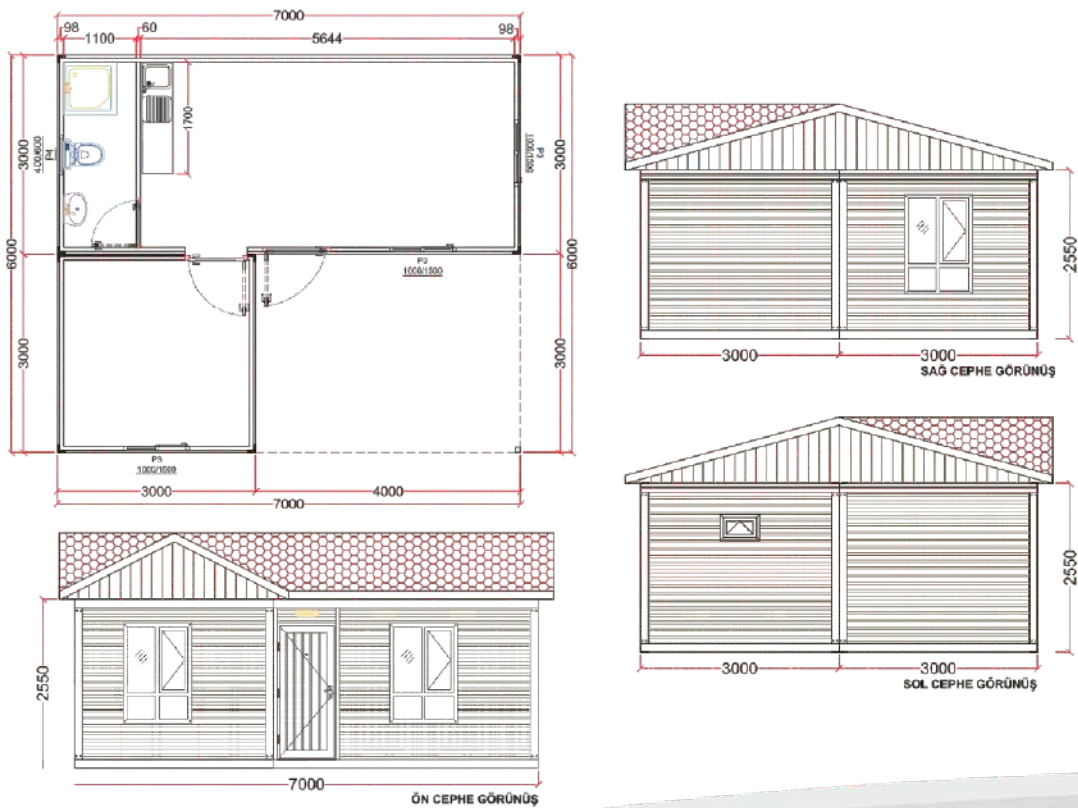
KONUT TİPİ KONTEYNER

28 m²



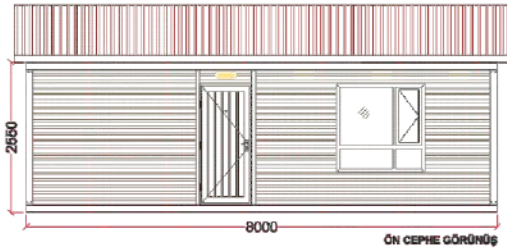
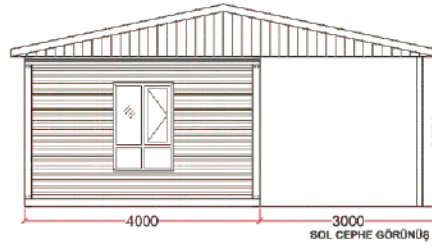
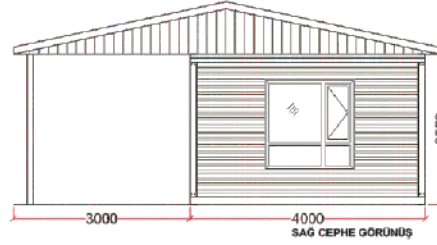
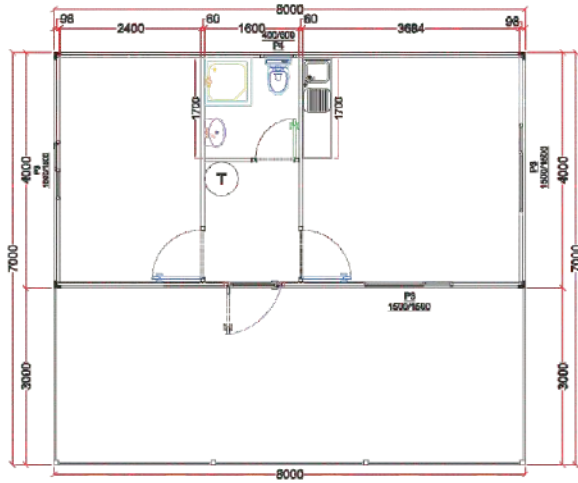
KONUT TİPİ KONTEYNER

42 m²



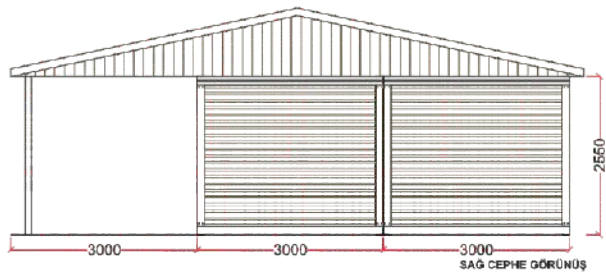
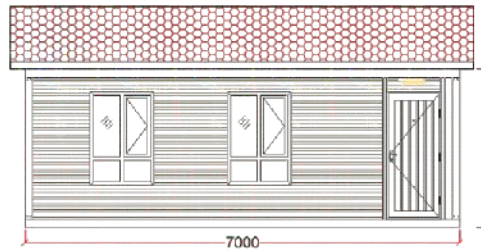
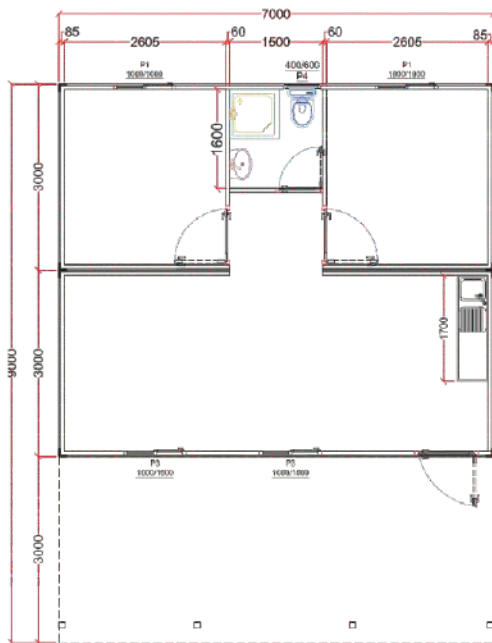
KONUT TİPİ KONTEYNER

56 m²



KONUT TİPİ KONTEYNER

63 m²

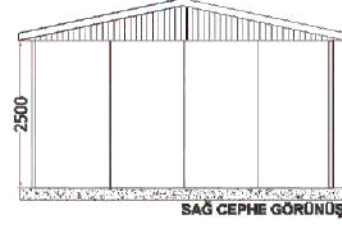
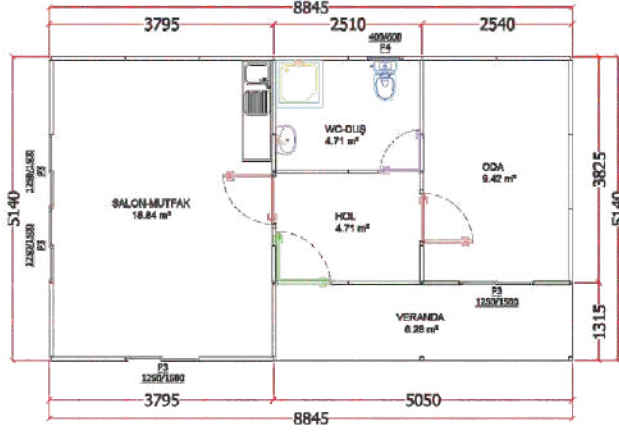






1+1 PREFABRİK KONUT

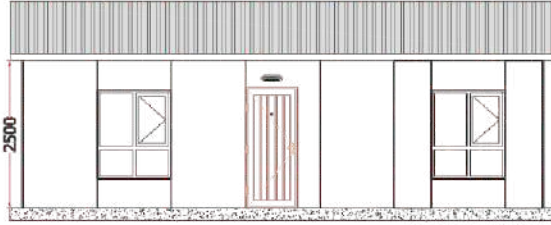
45.46 m²



SAĞ CEPHE GÖRÜNÜŞ



SOL CEPHE GÖRÜNÜŞ



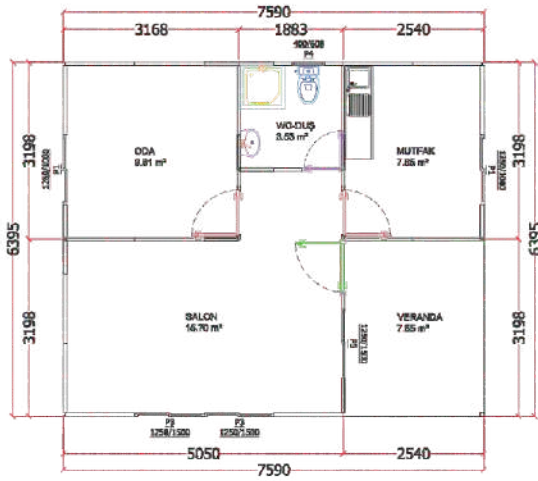
ÖN CEPHE GÖRÜNÜŞ



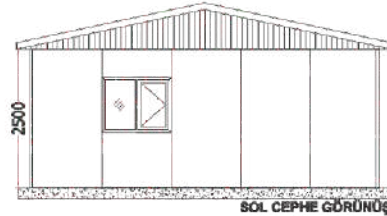
ARKA CEPHE GÖRÜNÜŞ

1+1 PREFABRİK KONUT

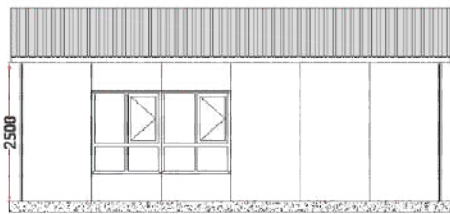
48.54 m²



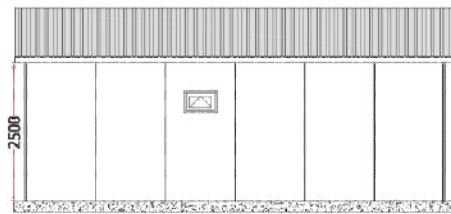
SAĞ CEPHE GÖRÜNÜŞ



SOL CEPHE GÖRÜNÜŞ



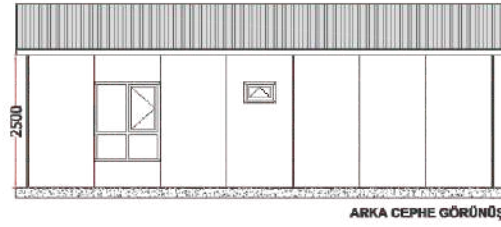
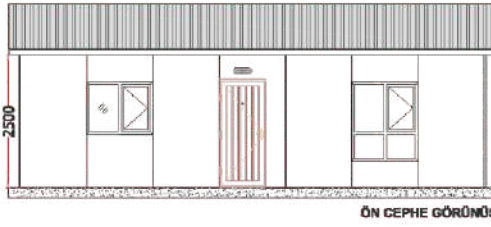
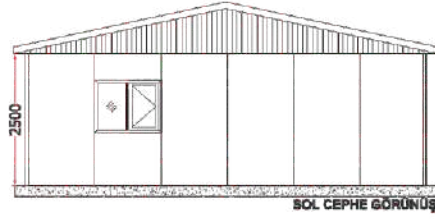
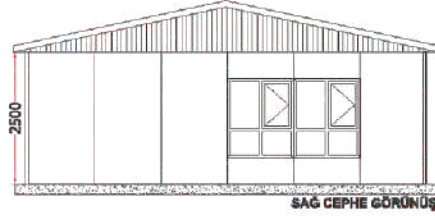
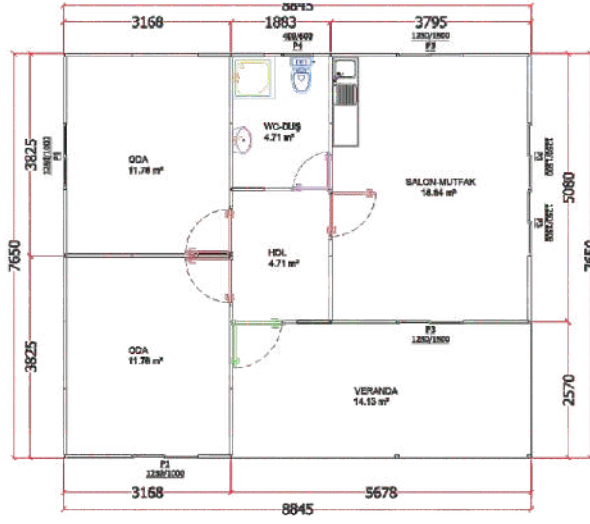
ÖN CEPHE GÖRÜNÜŞ



ARKA CEPHE GÖRÜNÜŞ

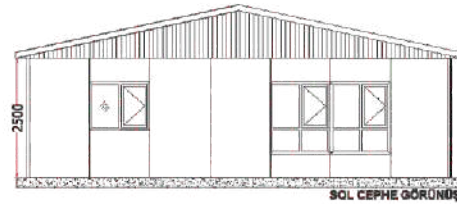
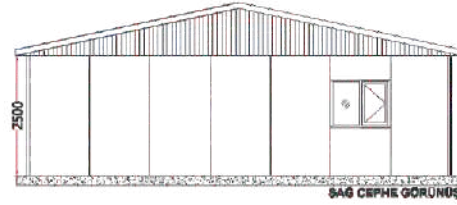
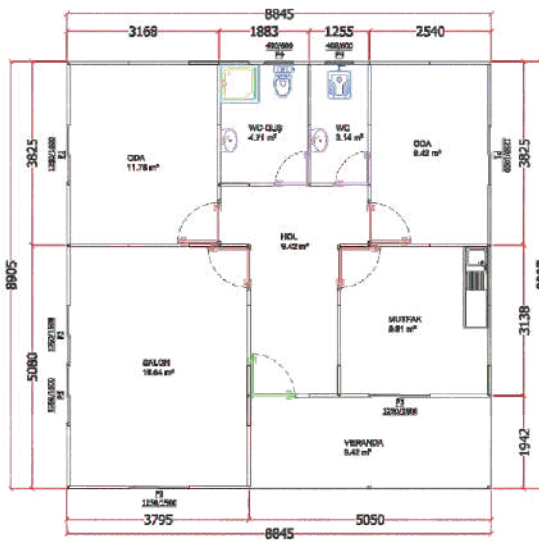
2+1 PREFABRİK KONUT

67.66 m²



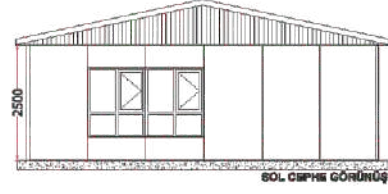
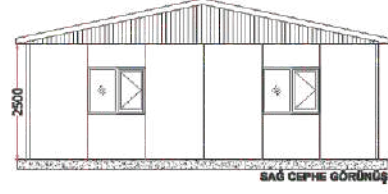
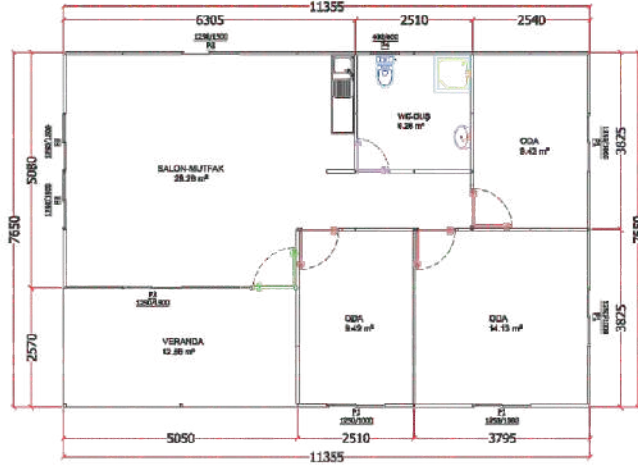
2+1 PREFABRİK KONUT

78.76 m²



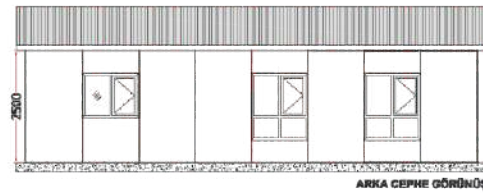
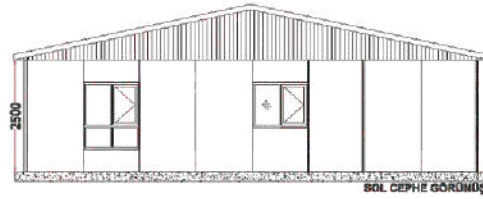
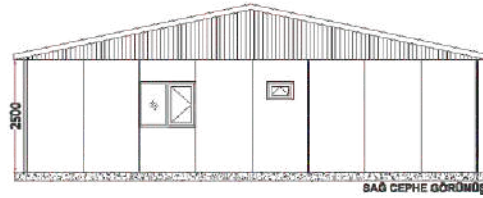
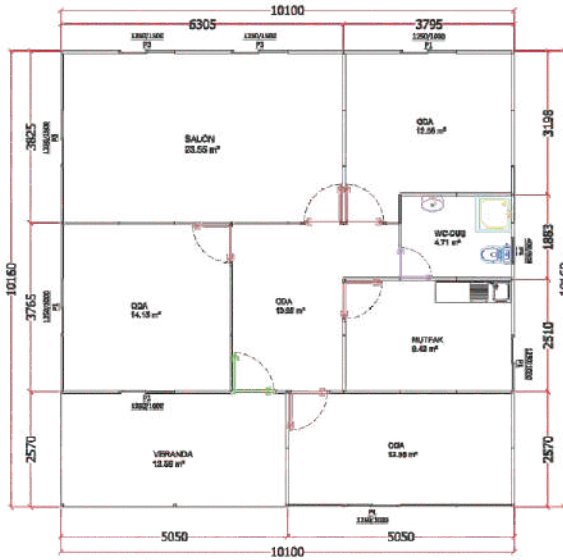
3+1 PREFABRİK KONUT

86.87 m²



3+1 PREFABRİK KONUT

102.62 m²







REFERANSLARIMIZ



DRN

PREFABRİK



Satıkadın Mahallesi Selçuklu Caddesi
No:35/C K.Kazan / ANKARA



0538 939 45 40



www.drnprefabrik.com.tr



info@drnprefabrik.com.tr